

F1 Suspended lamp

8-15W



Commercial lighting Expert

Your reliable Commercial Lightng Solution Partner from China

Features:

Materials: 6063 brushed Aluminum

Size: D63xH300mm/450mm/600mm

Finish: White RAL9016

Black RAL9003

LED brand: Citizen COB LED

LED lumen: 130-150lm/W @CRI80

Lamp efficiency: 90-120lm/W

Color:&CRI: 2700K 80+,90+,97+

3000k 80+,90+,97+

3500K 80+,90+

4000k 80+,90+,99+

5000K 80+,90+

Installation: Track 6/4 wire 3 phase, 3/2 wire 1 phase

Surface mounted

Driver brand: Tridonic, HEP, TCI, BOKE, Lifud

Voltage: AC200-240V, AC100-240V

Power Factor: >0.90

Dimmable: DALI, TRIAC, 0/1-10V, ZigBee, RF, Pust

Wattage: 8W,10W, 12W,15W

Adjustable: Continual 350°

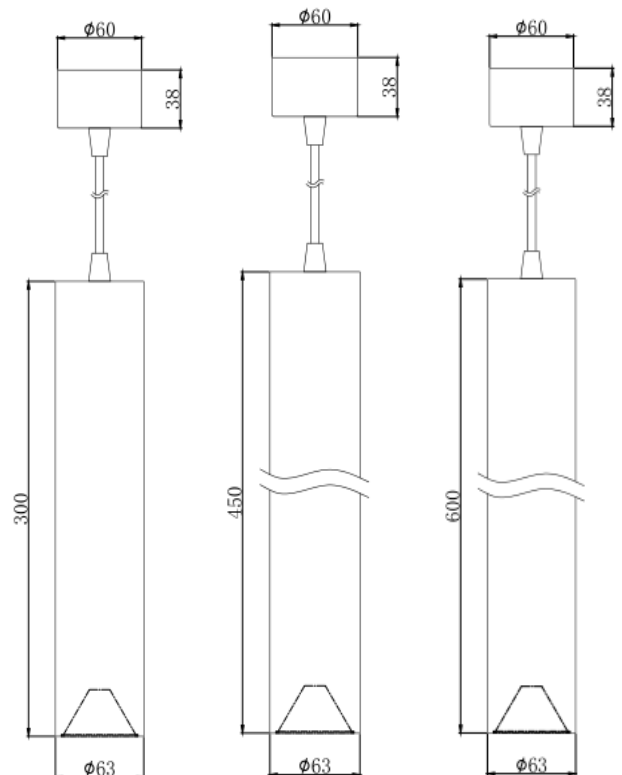
Vertical 90°

Beam angle: 15/24/38/60°

Warranty: 3-5 years

COB LED version

GU10/MR16/E27
light module version



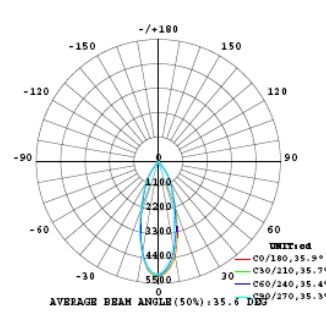
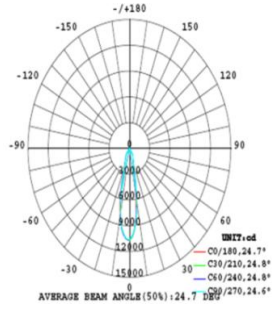
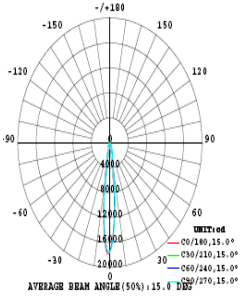
Drawing @ size

Light Distribution

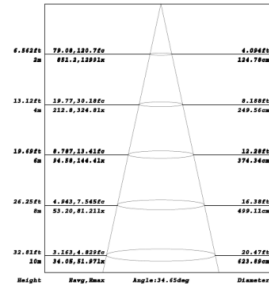
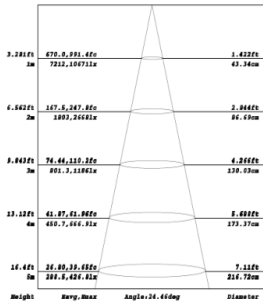
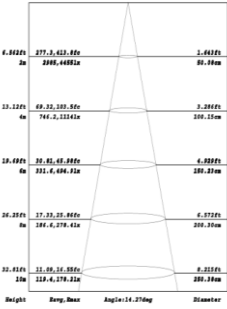
Beam angle: 15°

Beam angle: 24°

Beam angle: 36°



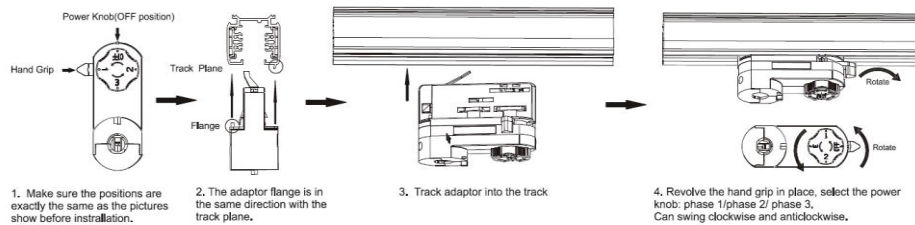
Distance curve



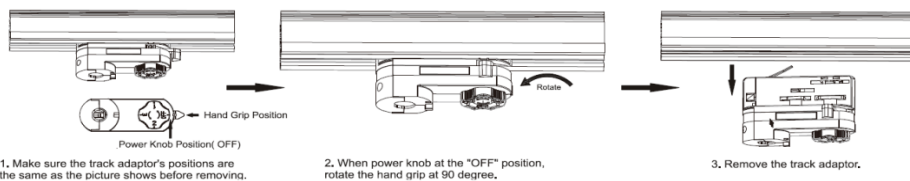
Package:

Model	XH-TL-8W-F1Z	XH-TL-10W-F1Z	XH-TL-12W-F1Z	XH-TL-15W-F1Z
Quantity:	25pcs	25pcs	25pcs	25pcs
Inner box size:	67x67x430mm	67x67x430mm	67x67x430mm	67x67x730mm
Carton size:	450*355*360mm	450*355*360mm	450*355*360mm	750*355*360mm
Gross Weight:	19.5kg	19.5kg	19.5kg	26.5kg

Installation manual



Remove manual



XH-TL-10W-F1S The technical data represent rated values for an ambient temperature of 25degree, the data values for the luminousflux are initially subject to a tolerance of +/-10%, those for the electrical connected load are initially subject to a tolerance of +/-10%, and those for the color temperature are initially subject to a tolerance of +/- 150K, No liability is assumed for typographical or printing errors the general terms and conditions of Xinghuo LED Tech Limited